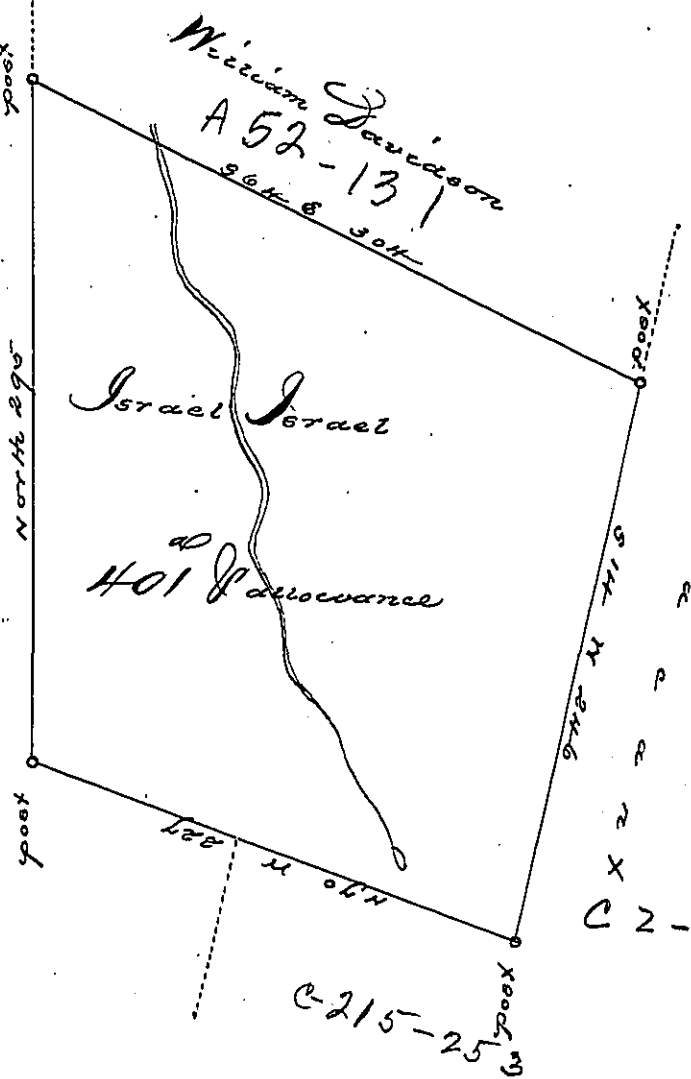


C-217-273

Benjamin Tomlinson



D 20-64
 D 14-260
 C 2-232

C-215-25

Situate on the heads of Shade Creek on the Top of the Allegheny Mountain in
 Quakering Township now Somerset County Surveyed 4th July, 1794, by
 Geo. Woods Esq. Late A.S., as appears by his official Draft remaining in my
 Office, in pursuance of a warrant granted to Israel Israel dated the 4th Feb-
 ruary 1794. Certified this 21st day of January 1804, by

John McLean Deputy.

To. Daniel Cochran Esq.
 Surveyor General

IN TESTIMONY that the above is a copy of the original remaining on file in
 the Department of Internal Affairs of Pennsylvania, made
 conformably to an Act of Assembly approved the 16th day of
 February, 1833, I have hereunto set my Hand and caused
 the Seal of said Department to be affixed at Harrisburg,
 this first day of March, 1898,

James W. Latta
 Secretary of Internal Affairs.